



Thanks to Lapstone Public School Stage 2 students
who shared their experience in June 2018:

Abbie, Alex, Ava, Baxter, Beatrix, Bindi, Bodhi, Cameron,
Charlie, Charlie, Charlotte, Chloe, Cooper, Dylan, Eddie,
Eliette, Emily, Emmett, Emmy, Emmy, Grace, Hamish,
Hayden, Hazel, Holly, Inti, Isaac, Jack, Jacob, Jai,
James, Jamie, Jessica, Josh, Josie, Keira, Kurtis,
Kya, Lacey, Leejae, Lincoln, Logan, Luca, Luka,
Luke, Madeline, Madelyn, Malia, Matilda, Naite,
Nathan, Niall, Noah, Nolan, Oliver, Owen, Rose,
Ruby, Ryan, Sophia, Sophia, Talulah,
Tommy, Tophy, Tully, Viti,
William and Xavier.

Special thanks to Jill Dark
for sharing the story of
Darks Common Reserve.

DARKS COMMON & BLUFF RESERVE

LAPSTONE - GLENBROOK

2.5 km return

1 hour

Easy grade with
some steps

A colorful illustration of a bush landscape. In the foreground, there are several trees with thick, reddish-brown trunks and green foliage. A dirt path winds through the landscape. In the background, there are rolling hills and more trees. The sky is light blue with some white clouds. The overall style is that of a children's drawing or painting.

DARKS COMMON & THE BLUFF RESERVE • 2.5 km return - Easy grade

WHAT TO BRING IN YOUR BACKPACK

- a bottle of water
- plenty of snacks
- a raincoat
- pencils for drawing
- warm clothes in winter
- small bag for rubbish
- wear a hat, sunscreen and
- a small first aid kit could be useful
- enclosed walking shoes
- small torch
- camera

BUSH TRACKER SAFETY

Safe Bush Trackers are prepared and

- know your track and take your map
- ask permission from an adult and let them know where you are walking and when you return
- don't go near cliff edges and stay behind safety fences.

MINIMAL IMPACT BUSH TRACKING

means you try to do no damage at all to the environment so that someone following you could not tell you had been there.

Take nothing but photos. leave nothing behind:

- always keep to the track & tread softly & quietly
- don't pick the flowers or plants in the bush
- be gentle and careful if you touch things (don't touch snakes and spiders!)
- carry your rubbish out with you
- Bush Trackers walk in small groups (4-15 people)

The Bush Trackers program helps engage children and families in nature. Bush Trackers helps create a child friendly community and grew from support of the Stronger Families Alliance (www.strongerfamilies.net.au). Bush Trackers is currently funded by the NSW Environmental Trust. The Bush Trackers team worked with NSW National Parks and Wildlife Service Discovery Rangers to guide school kids aged 8-10 years old on a local bushwalk, enjoying nature play, learning about natural and cultural heritage and encouraging the kids to share their experience through words, poems, drawings and photos. PerformingDesign use these to create the map and guide to encourage other kids and families to safely enjoy the bush. For more information, tips and maps go to: www.bushtrackers.com.au; www.wildwalks.com; www.nationalparks.nsw.gov.au. or www.bmcc.nsw.gov.au We respectfully acknowledge the Traditional Custodians of this place.

Darks Common and Bluff Reserve Track • Distance: 2.5km return • 1 hour • Grade: Easy with some steps

Explore an old tramway (or Spurline) in the lower Blue Mountains through sandstone cuttings in Darks Common to spectacular views to the east at Ross Lookout and to the south and west at Chalmers Lookouts in the Bluff Reserve.

The tramway tells the story of our railway history, once the site of railway worker camps in the early 1900's. The tramway brought construction material for the railway and Glenbrook tunnel which opened in 1913 and is still used today. Can you find the Winding House Base that moved heavy building materials down a funicular to the tunnel? Can you see the railway that is 100metres down the cliff or further to Glenbrook Creek?

The Dark family, of famous Australian historical author Eleanor Dark, lived near here and fought for its preservation. The term 'Common' means belonging to the whole community, meaning: you, your family and friends as well as native plants and animals. Grab a picnic, you can bring your dog on a leash, and explore this beautiful shale and sandstone country with historic heritage.

• Beware of dangerous unfenced cliff edges.

• We respectfully acknowledge the Darug and Gundungurra Traditional custodians of this place.



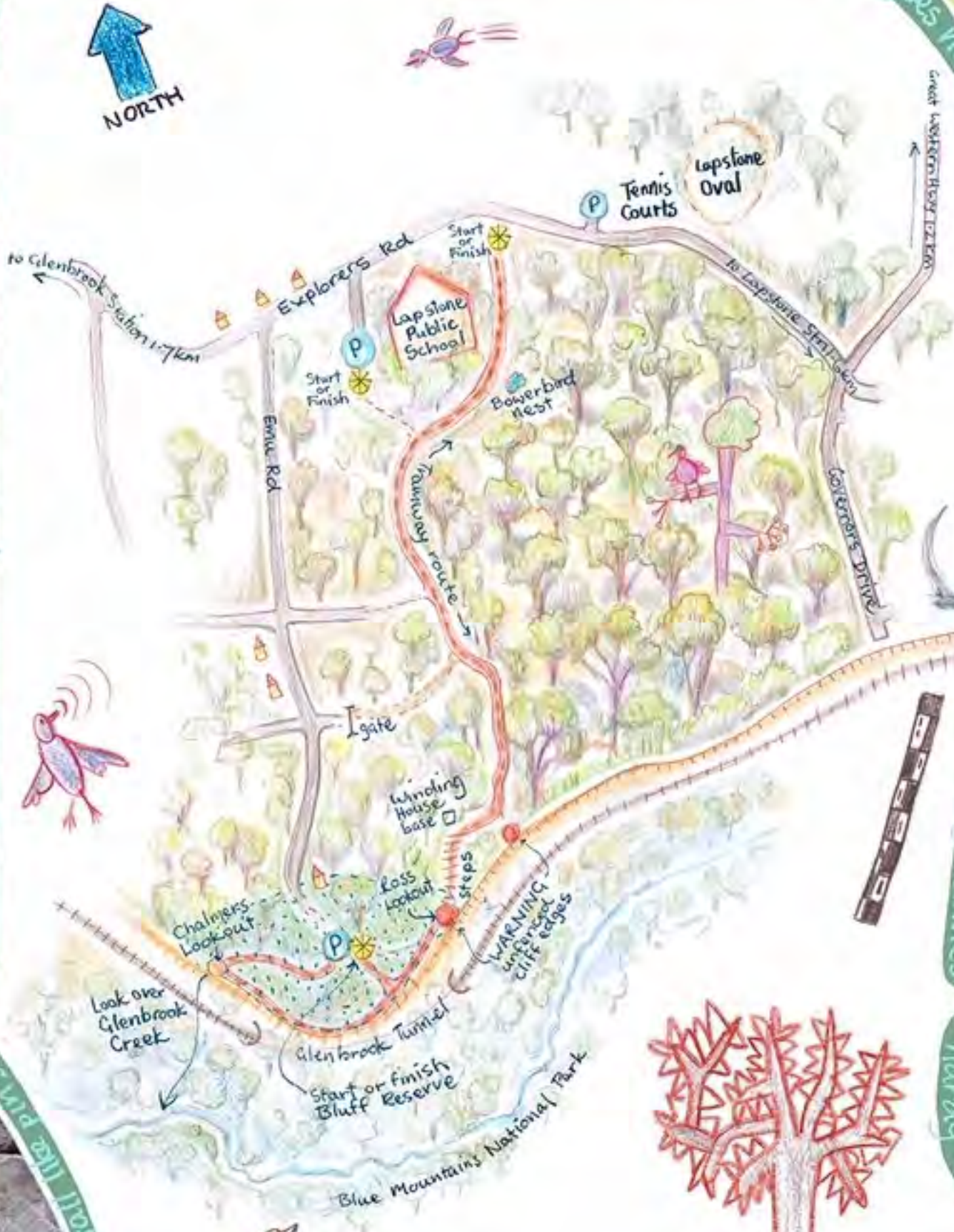
lovely scenic view - fun for everyone of you - train goes too - owl goes too - racks area



Look can you find these plants?



bowersbirds build to impress the ladies



Write words that describe what you see, hear or feel (adjectives)



Listen, how many different bird calls can you hear?



rocky ravines

hardy hills



Can you guess who lives here?



Look if you are quiet & look carefully you might see some creatures

steep steps



Feel the rock is it warm or cool?

drop away you fall like pits

SITE FACILITIES
 - Chalmers Lookout is a large fenced lookout with expansive views over the Blue Mountains National Park and towards the Southern Highlands.
 - Dogs on leashes allowed.

- walking track
- tracks
- dirt road
- road
- warning cliffs!
- start and finish
- parking
- Glenbrook Creek (200m down)
- Railway (100m down)
- Bluff Reserve

Touch bark, leaves, rocks, moss, rushes and sedges. Hug a tree
 Things not to touch spider & snake holes, fungi, spiders, insects

shed their skins



paper bark perfection - clever creatures

Find these and tick the box